

SAWREY
CONSULTING ENGINEERS

CIVIL STRUCTURAL FOUNDATIONS

92 Queens Drive PO Box 30-444 Lower Hutt
Telephone Bus (04)566 1483 Fax (04)566 9118
Email info@sawrey.co.nz

CLIENT:

**St Pauls
Church,
Waiwhetu**

REVISIONS:

REV No.	DATE	DESCRIPTION
O	29.05.15	Original
A	30.10.15	Revision A
B	22.11.16	FOR CONSENT

CHECK ALL DIMENSIONS ON SITE

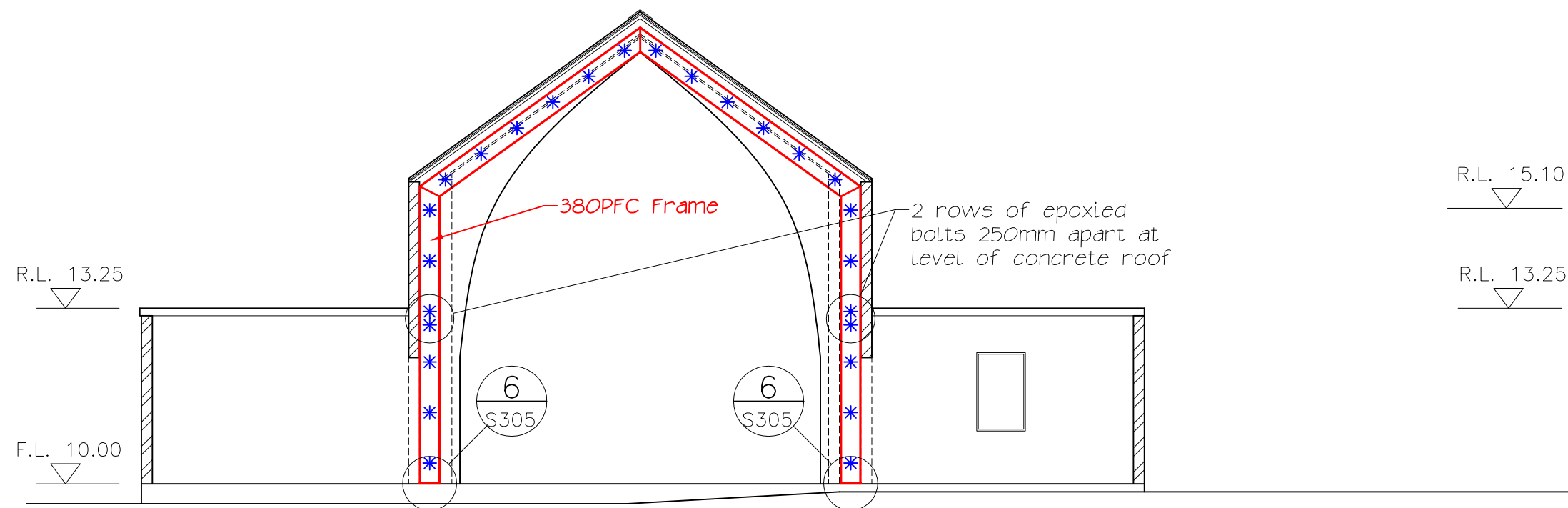
THIS DRAWING IS COPYRIGHT.
IT REMAINS THE PROPERTY OF
SAWREY CONSULTING ENGINEERS LTD AND
MAY NOT BE REPRODUCED
WITHOUT PERMISSION.

**Seismic Strengthening
of St Pauls Church,
Waiwhetu**

Sections

DRAWN:	D.M.S.
CHECKED:	
APPROVED:	
DATE:	29.05.15
SCALE:	1:100
JOB NO:	8172/3

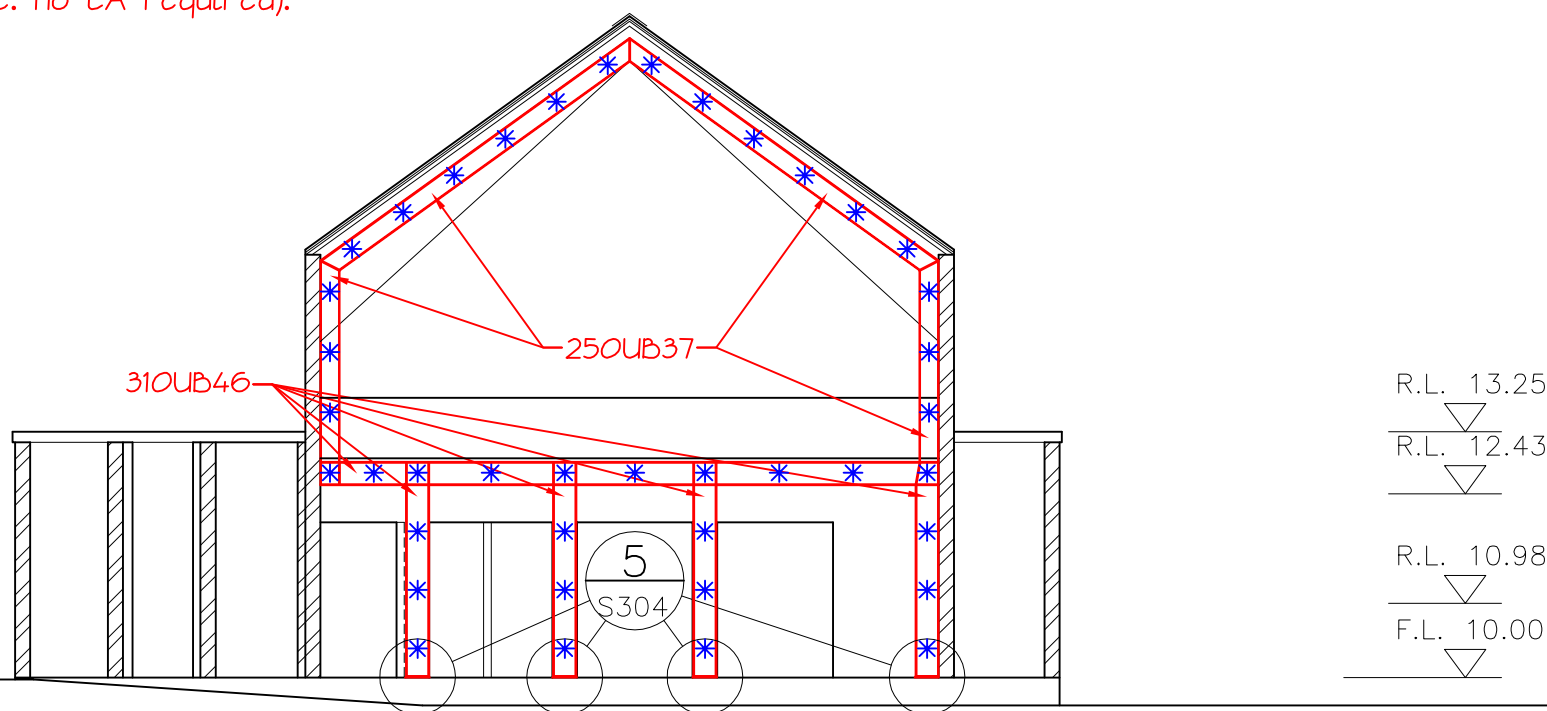
DWC.NO.	SHEET NO.
8172/3	S202B
	IN SET OF



Section D
1:100
Frame D
S101

* = Frame-Wall Bolting Locations.
Refer to "Typical Detail of UB
Frame to Concrete Connection"
on S301 for Frame C fixings.
Frame D fixings to concrete
to be similar, except with
bolts fixed directly through
web of 380PFC and into
concrete (i.e. no EA required).

Note: All splice welds for
Frames A, B, C & D are to be
Full Strength Butt Welds.
Stiffener plates for portal
frames are to be 6mm F.W.A.R.



Section C
1:100
Frame C
S101