

SAWREY
CONSULTING ENGINEERS

CIVIL STRUCTURAL FOUNDATIONS

92 Queens Drive PO Box 30-444 Lower Hutt
Telephone Bus (04)566 1483 Fax (04)566 9118
Email info@sawrey.co.nz

CLIENT:

St Pauls Church, Waiwhetu

REVISIONS:

REV No.	DATE	DESCRIPTION
O	29.05.15	Original
A	30.10.15	Revision A
B	22.11.16	FOR CONSENT

CHECK ALL DIMENSIONS ON SITE

THIS DRAWING IS COPYRIGHT.
IT REMAINS THE PROPERTY OF
SAWREY CONSULTING ENGINEERS LTD AND
MAY NOT BE REPRODUCED
WITHOUT PERMISSION.

Seismic Strengthening of St Pauls Church, Waiwhetu

Sections

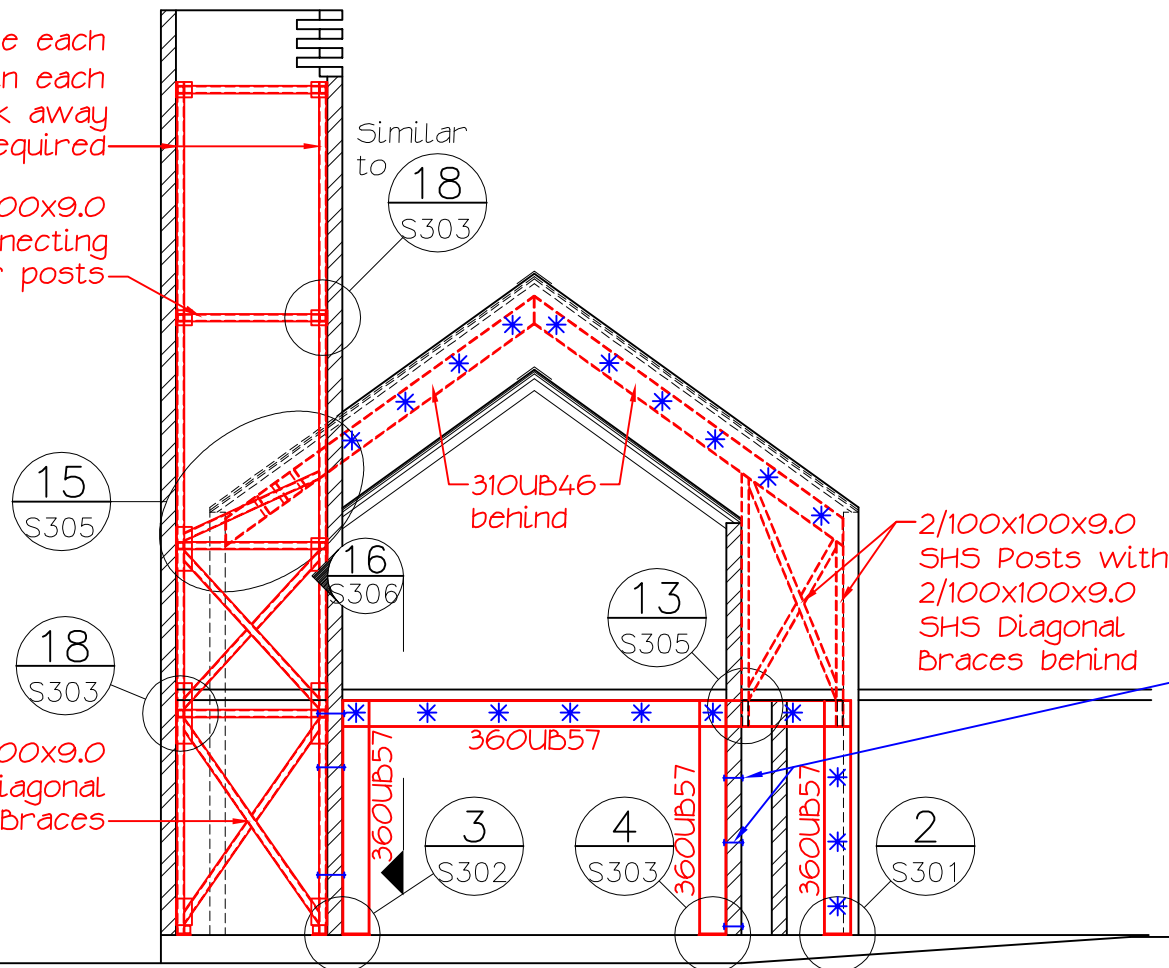
DRAWN: D.M.S.
CHECKED:
APPROVED:
DATE: 29.10.15
SCALE: 1:100
JOB NO: 8172/3

DWG. NO. 8172/3 SHEET NO. S201B
IN SET OF

4/100x100x9.0 SHS Posts (one each corner of bell tower). Crane in each corner post. Locally break away existing concrete slabs as required

4/100x100x9.0 SHS connecting corner posts

R.L. 13.25
R.L. 12.43
R.L. 10.98
F.L. 10.00



M16 G8.8 Bolts through flange of 360UB57 and into concrete wall. Either drill and Reo 502 SA epoxy threaded rods 120mm into concrete or bolt all the way through the wall and install 50x50x6mm Washers against concrete on far side.

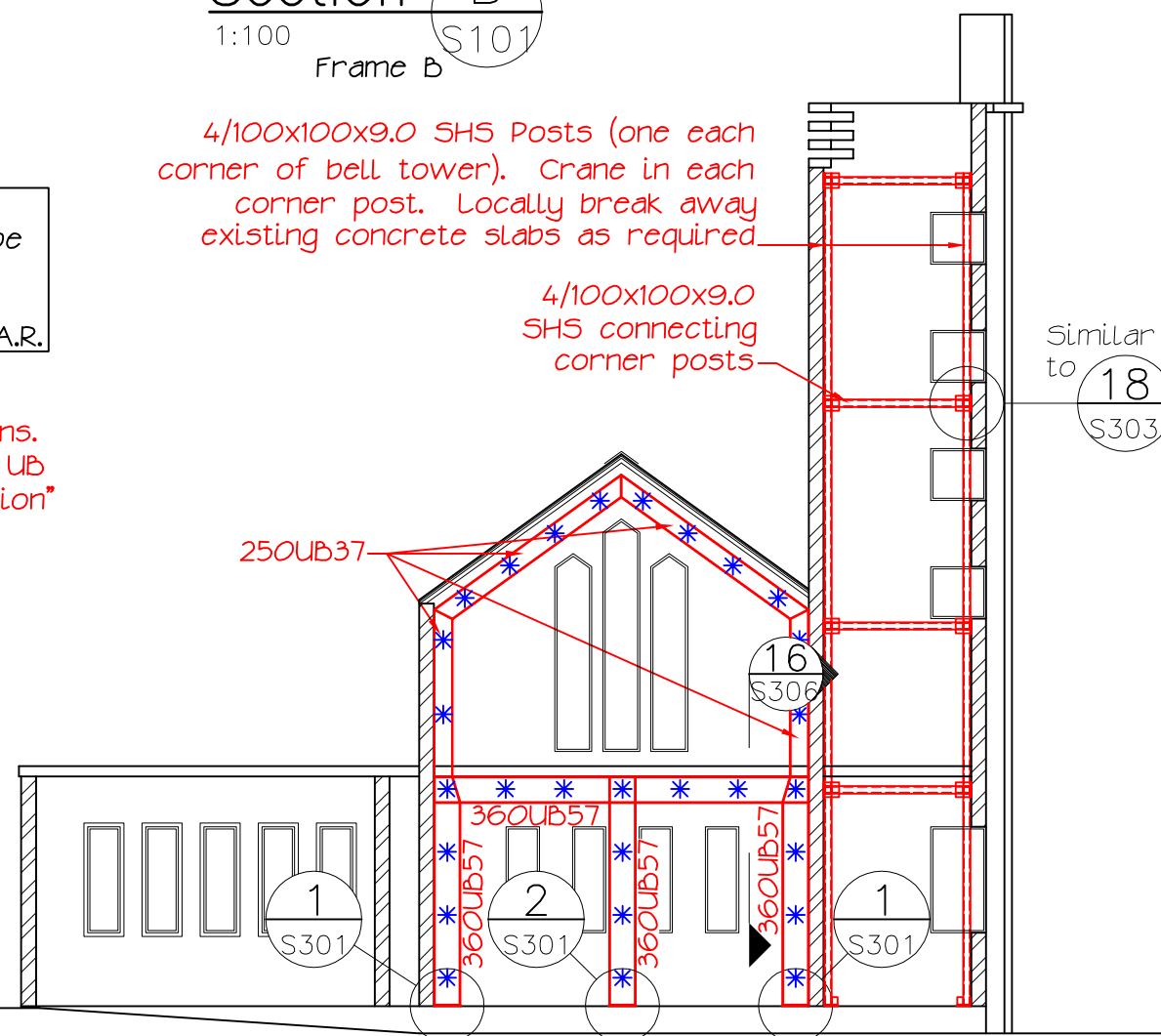
Section B
1:100
Frame B

4/100x100x9.0 SHS Posts (one each corner of bell tower). Crane in each corner post. Locally break away existing concrete slabs as required

4/100x100x9.0 SHS connecting corner posts

Note: All splice welds for Frames A, B, C & D are to be Full Strength Butt Welds. Stiffener plates for portal frames are to be 6mm F.W.A.R.

* = Frame-Wall Bolting Locations. Refer to "Typical Detail of UB Frame to Concrete Connection" on S301.



R.L. 13.25
R.L. 12.43
R.L. 10.98
F.L. 10.00

Section A
1:100
Frame A